

User Guide for MORSE Command Simulation Setup and Running Instructions

Michael Rectenwald, Rahul Singh, Joseph A. Giampapa
and Katia Sycara

CMU-RI-TR-03-40 ₂

User Guide for MORSE Command Simulation Setup and Running Instructions

Michael Rectenwald, Rahul Singh, Joseph A. Giampapa and Katia Sycara, the Robotics Institute

**Sandra Esch and Bonnie John, the Human-Computer Interaction Institute
Carnegie Mellon University
5000 Forbes Avenue
Pittsburgh, PA USA**

Acknowledgements: This research was sponsored by the National Aeronautics and Space Administration Grant NCC21317

User Guide for MORSE Command Simulation Setup and Running Instructions

1. Introduction to MORSE Command

Morse Command is the command center for running experiments on Morse Stations. (See Morse Station User Guide for instructions for using Morse Station for experimental subjects at http://www.cs.cmu.edu/~softagents/morse/MORSE_User_Guide1.PDF). In addition to its scenario editing functions (see Morse Scenario Editing Guide), Morse Command is the GUI for registering the Morse Station and Command agents with an Agent Name Server (ANS), a directory of agents. An ANS allows Morse Station agents to find and communicate with each other in a multiagent system. (See the Retsina ANS documentation at <http://www.cs.cmu.edu/~softagents/ans/ANSv2.9.PDF> for more information on the function and use of ANS). Morse Command allows Morse Stations (Alpha, Bravo, Charlie, etc.) to be added to scenarios for inclusion in an experiment.

Morse Command is also an editing tool for Morse scenarios. This function of Morse Command is not discussed here. We discuss the Morse Scenario Editor in another document. The purpose of this document is to allow users to install and set up Morse Command and Morse Station, in order to run experiments on Morse Stations.

1.1. Installing Morse Executables

- 1.1.1. Download the MorseStation and Morse Command executables from the Morse download page: <http://www-2.cs.cmu.edu/~softagents/morse/downloads.html>.
- 1.1.2. Install each program by following the installation instructions upon double-clicking the icons.

1.2. Starting and Registering MorseStation

To run an experiment, you must first start an instance of MorseStation.

- 1.2.1. After installing both programs, start MorseStation first by double-clicking its icon, which should be on the desktop. The MorseStation GUI will open. Go to System, and select “Edit Settings,” as in Figure 1 below.

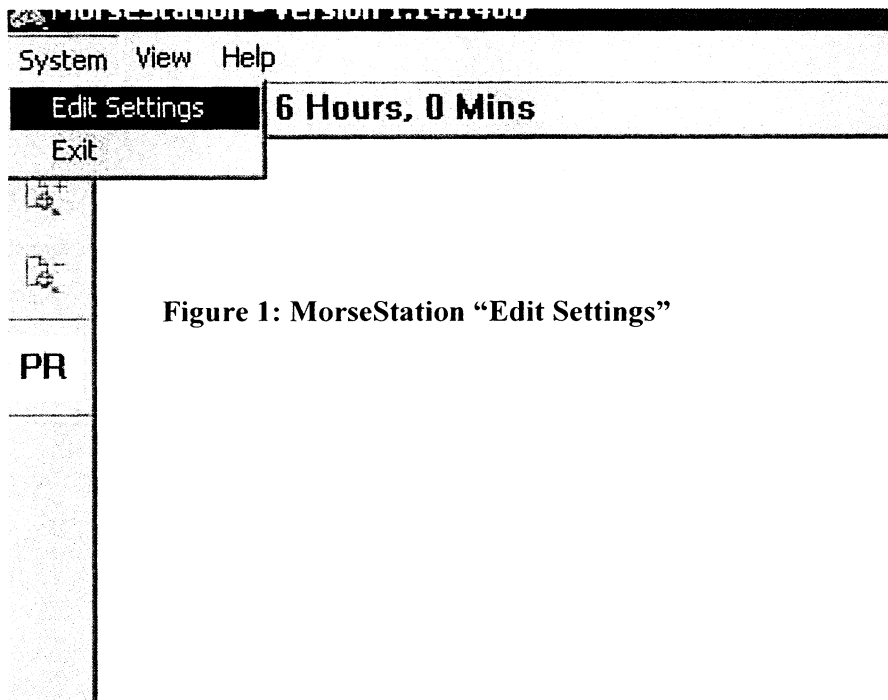


Figure 1: MorseStation “Edit Settings”

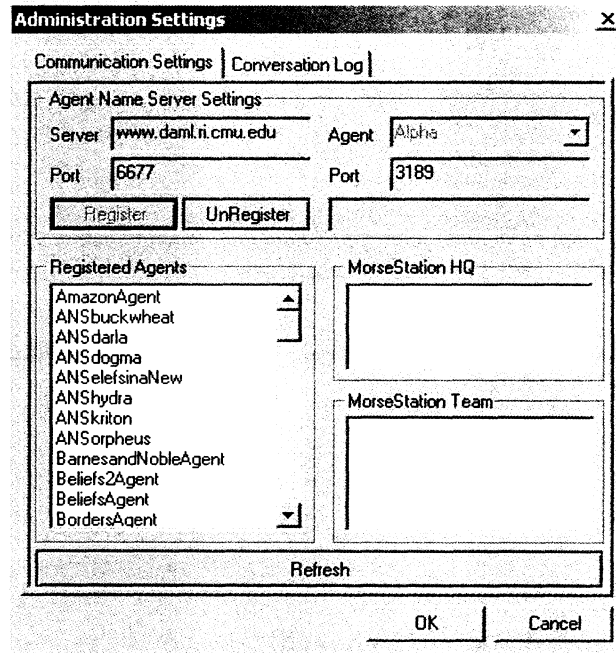


Figure 2: Administration Settings

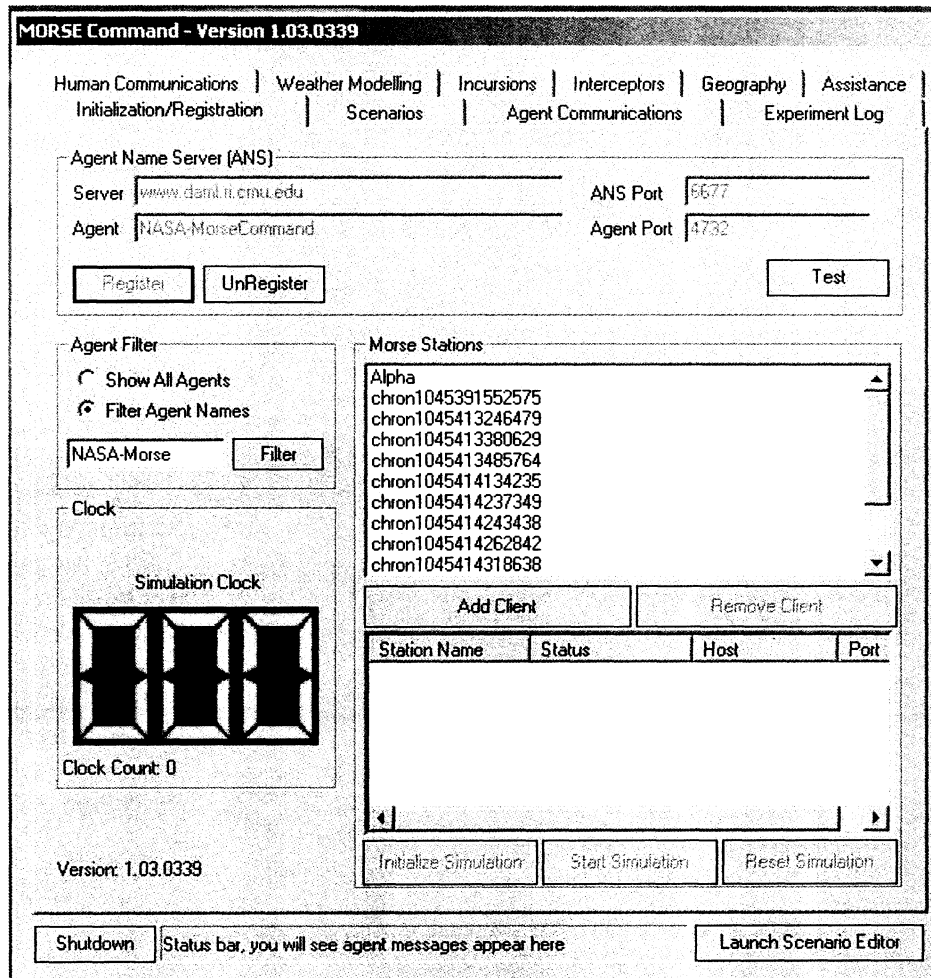
1.2.2. The Administration Settings GUI opens. The ANS settings –location and port of Agent Name Server – will be preset. In the Agent window on the right, select the agent you wish to run and click “Register.” Click “Ok.” See figure 2.

1.3. Start and Register Morse Command

Next you must start and register Morse Command.

1.3.1. Double click on the Morse Command icon. This will open the Morse Command GUI as shown in figure 3, below.

1.3.2. The Server will be preset. Click on “Register” to register Morse Command with the ANS.



**Figure 3: Morse Command:
Registered**

- 1.3.3. In the Morse Stations window, find the agent you started and click on it.
- 1.3.4. With the station highlighted, click on “Add Client.” This will add the station to the window. The station status, host and port is displayed, as in figure 4, below.

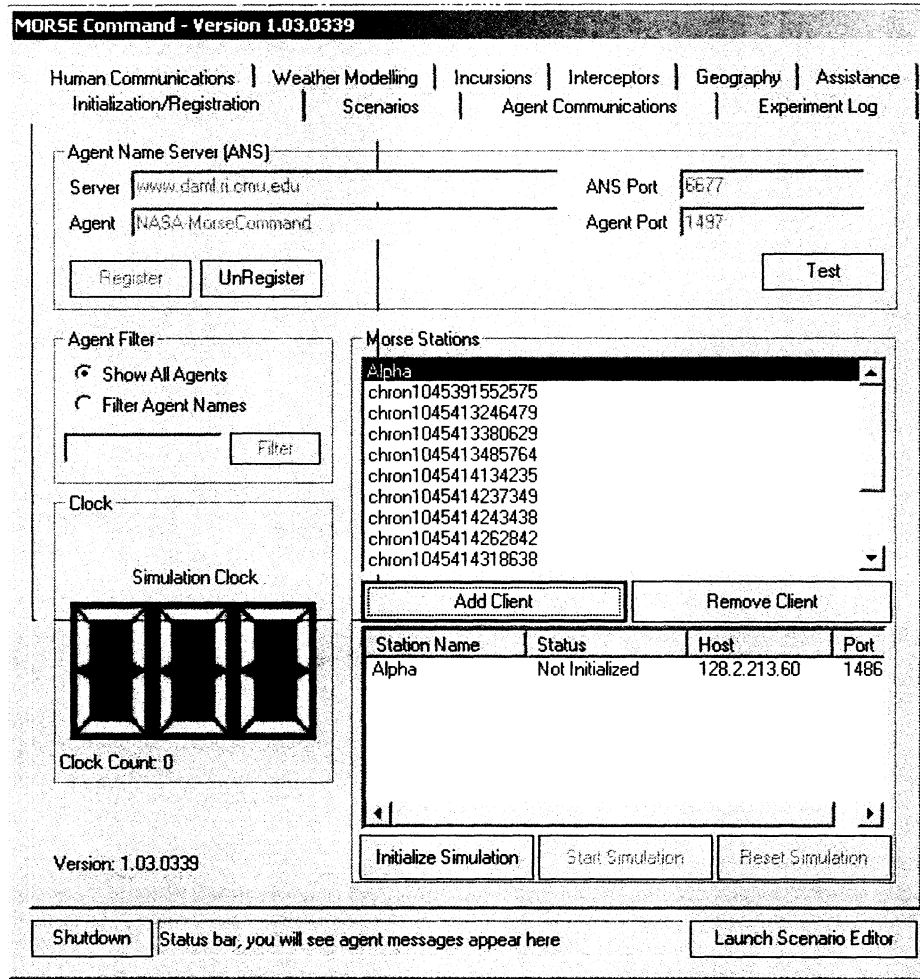
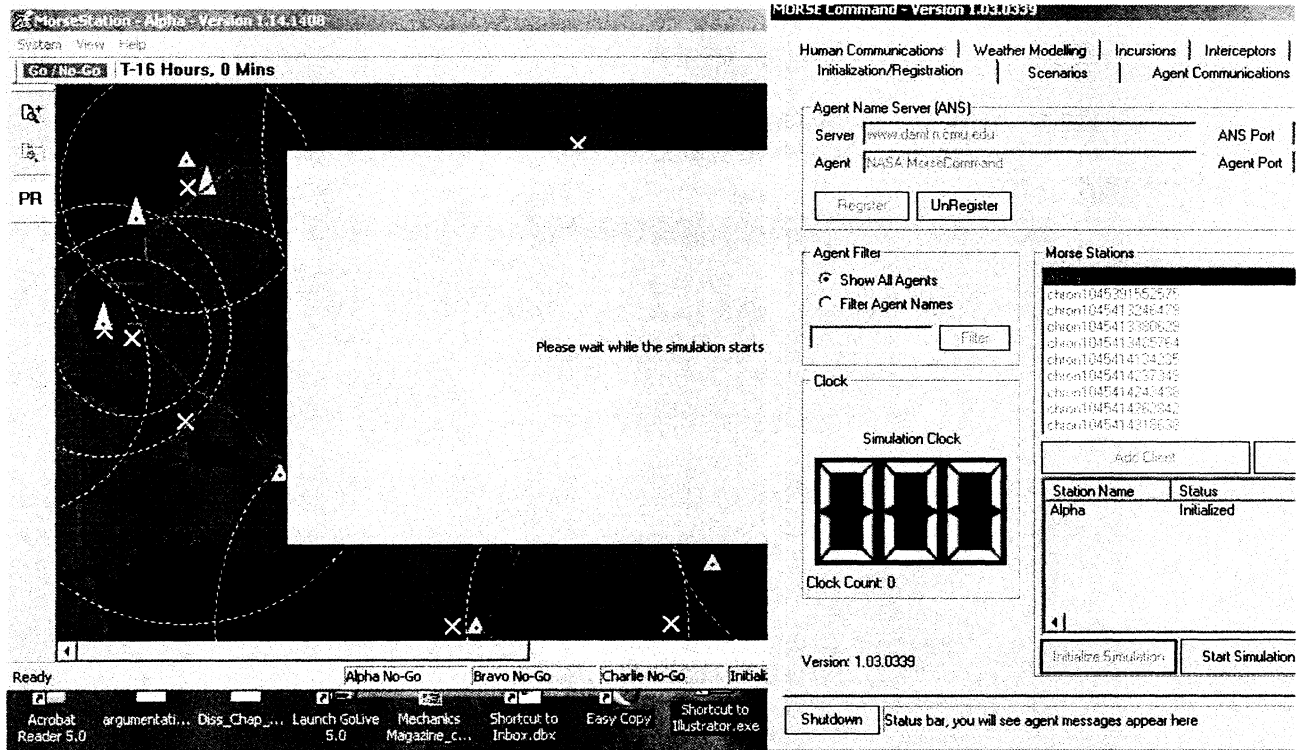


Figure 4: Morse Station client added

- 1.3.5. With the station(s) to be initialized for the simulation added to the list of clients, click on “Initialize Simulation.” This will load the simulation scenario into the Morse stations. Figure 5 shows Morse station and Morse Command with the simulation initialized.



1.3.6. When the simulation is initialized, click on “Start Simulation.” The simulation should start immediately. See the MorseStation User Guide at http://www.cs.cmu.edu/~softagents/morse/MORSE_User_Guide1.PDF for instructions on operating within MorseStation.